

SHERWOOD
ELECTRONICS

Cable Assembly Excellence

CABLE ASSEMBLY EXCELLENCE

At Sherwood Electronics we have over 21 years experience in delivering high quality cable assemblies to a variety of industries. With our flexible supply policy and broad range of capabilities, we provide an extensive range of products on customer friendly supply terms. Our in house experts are both knowledgeable and extremely approachable, allowing us to deliver trust, confidence and peace of mind to our customers.

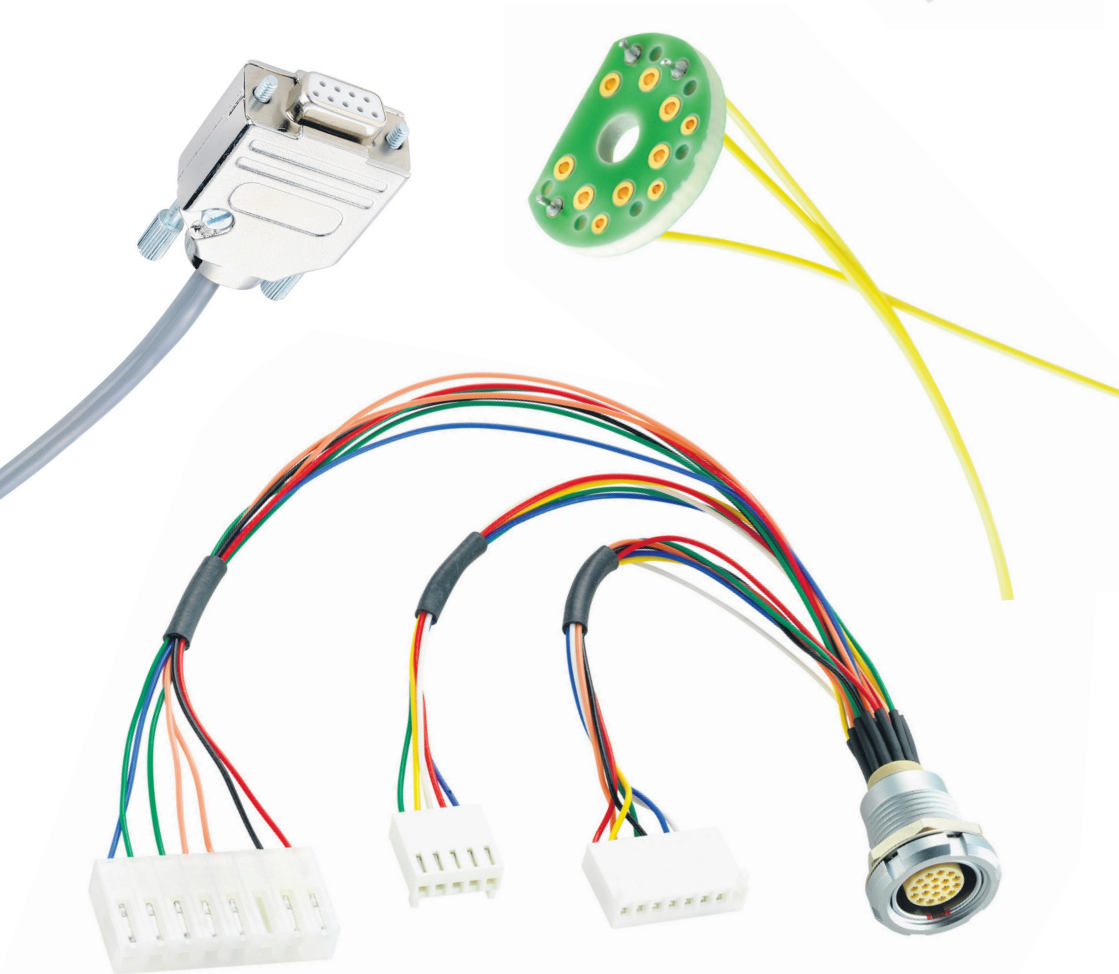
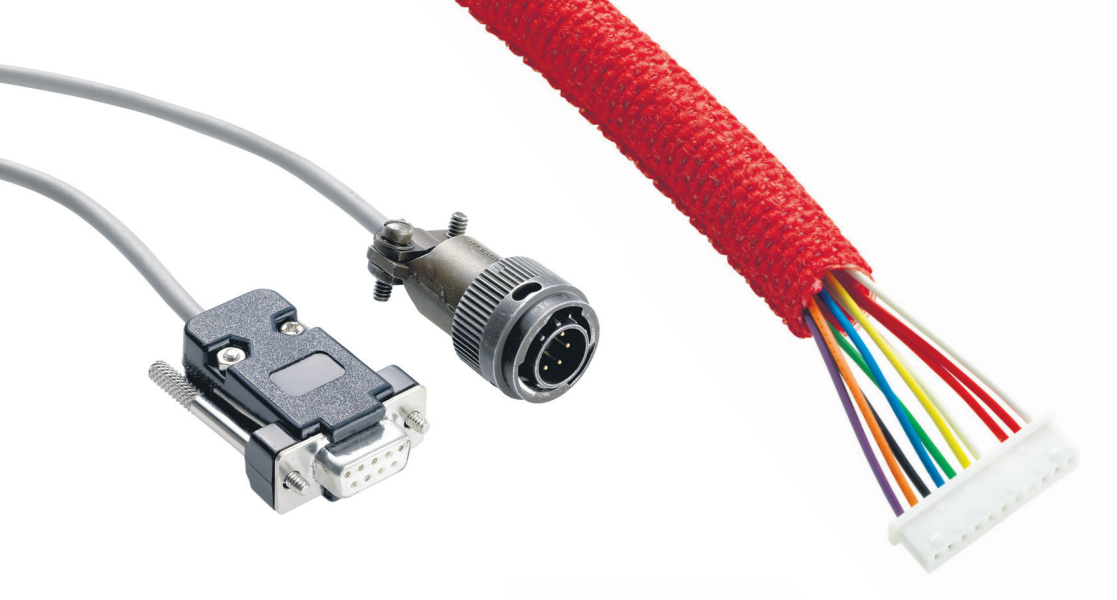
- High quality cable assemblies
- Fast and flexible delivery options
- 21 years' experience of cable assembly design and manufacture
- Customer friendly attitude
- Extensive range of capabilities
- Large and small volume assembly services
- UK & Far East manufacturing facilities
- 100% cable testing policy
- IPC/WHMA-A-610
- IPC/WHMA-A-620
- REACH compliant
- ISO 9001:2008

“To achieve world class recognised status as a cable assembly specialist, and become the preferred solution provider to local, national and world wide companies.”

**Vision
Statement**

COMPANY CORE VALUES





IN HOUSE CABLE ASSEMBLY FACILITY

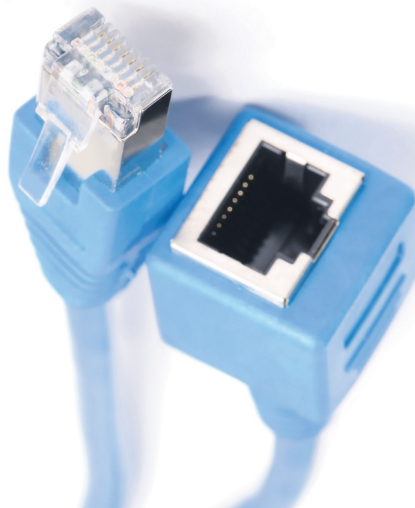
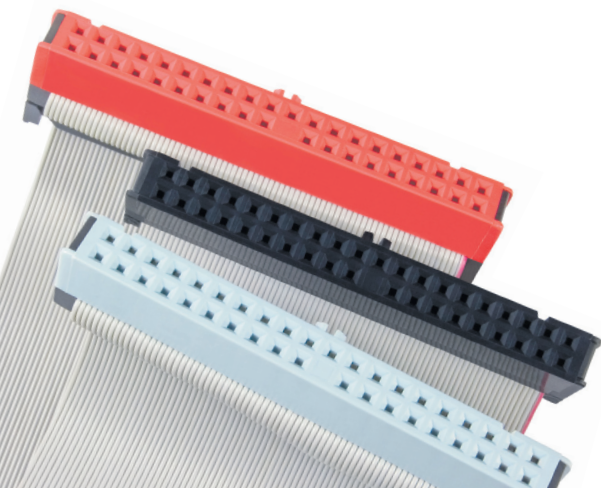
Utilising our Cut/Strip/Crimp machinery and Mecal Semi Automated presses, we have the capability to terminate a huge variety of crimp solutions provided by all of the major manufacturers, such as MOLEX, JAE, JST, TYCO, HARWIN, EDAC, FCI, LEOTRONICS, TOBY, HIROSE, etc. We also solder to IPC standards and manufacture IDC Ribbon Cables. Examples are listed below:

Application Tooling List

- Molex Mini Fit Junior
- Molex Micro Fit 3
- Molex Picoblade (51021 Series)
- Molex Picoblade LP (51146 Series)
- Molex KK 2.54mm
- Molex KK 3.96mm
- Molex C-Grid SL
- Hirose DF13 series
- Hirose DF11 series
- Hirose DF3 series
- JAE FI-X series
- Harwin M20 series
- Harwin M22 series
- JST PHR series
- JST XHP series
- JST SPHD series
- Plus numerous hand tools

UK Facility Plant List

- Schleuniger Powerstrip 9500
- Schleuniger EcoStrip 9320
- Schleuniger OmniStrip 9400
- Mecal crimp presses
- GLW ferrule machine
- Komax Alpha 422
- JST PP3 crimp machine
- Schleuniger Unistrip 2015
- Schleuniger Unistrip 2500
- GLW EC65 crimp machines
- Automatic screwdrivers
- Weller solder stations
- Izumi hydraulic press
- Cirris test equipment
- Artos dereelers
- High pressure vacuum chamber
- Hipot tester



FAR EAST ASSEMBLY FACILITY

Our Taiwan based office takes care of all products sourced from the Far East. The benefit of having this office, is that we realise the economies of a Far Eastern manufacturing base whilst maintaining all the quality levels required. They can control pricing negotiations and logistical management to facilitate the delivery of first class products and service. In addition, we have monthly sea shipments, fortnightly air shipments and UPS Express shipments as required.

Far East Capabilities

- Soldered cable assemblies
- Crimped cable assemblies
- Co-Ax cable assemblies
- Over Moulded cable assemblies
- Bespoke Moulded assemblies
- Ultrasonic welding
- PCB assemblies
- Bespoke raw cable design & manufacture
- Bespoke product design & manufacture
- USB, HDMI, DVI, Displayport assemblies
- Mains leads
- Cat5E, Cat6, Cat6A



CONNECTOR RANGES


We source and stock a wide range of connectors for all industries. The connectors held in stock are both PCB mount and cable mount. The range starts at simple IDC Sockets and D Type Connectors, right through to IP68 fully waterproof products and military specification parts.

- D Type Connectors
- IP 67/68 Connectors
- IDC Connector ranges
- IDC Ribbon Cable
- PCB headers
 - Wire to board
 - Board to board
- Mil Spec Connectors
- High Speed Data Connectors
- USB Connectors
- Displayport Connectors
- HDMI Connectors
- Crimp Connector ranges
- Co-Axial Connectors (RF)
- Professional Audio Visual Connectors
- DIN41612 Connectors
- RJ45/Modular Connectors
- Metal & Plastic Hoods



SPECIAL PROJECTS

Sherwood Electronics also undertake special project work. Ranging from box build projects, PCB hand soldering, potted assemblies and overmoulded products, we can assist with most electronic sub assembly requirements. See below a couple of our recent projects undertaken:

	 Formula E	Rail Loom
Challenge	The requirement was for deployable, ruggedised high quality cable assemblies for use outdoors.	We were presented with a very greasy, old wiring loom from a railway locomotive.
Issue	The cables needed to be resilient to weather conditions, temperatures and general wear and tear from the environments they are used in.	The task was to reverse engineer the loom with no other information available. No Bill of Materials, Data Sheets or Drawings.
Solution	Utilising our experience in this field, we quickly came to a finalised design which fitted exactly our clients' design brief.	We commenced identifying all the components and the wire specification. The cost of the materials were requested, while we produced a drawing from which we could calculate the labour within the harness.
Outcome	The cables have been used during initial testing and will now be utilised worldwide during the inaugural Formula E season.	The Customer now has full documentation for the wiring looms and we have a contract to produce looms for the foreseeable future.





Sherwood Electronics Limited

Units 1 & 2 Paragon Works, Wilsthorpe Road
Long Eaton, Nottingham NG10 3JW

www.sherwoodelectronics.co.uk

E. sales@sherwoodelectronics.co.uk

T. +44 (0)115 9720100

F. +44 (0)115 9721900



Registration, Evaluation and
Authorisation of Chemicals